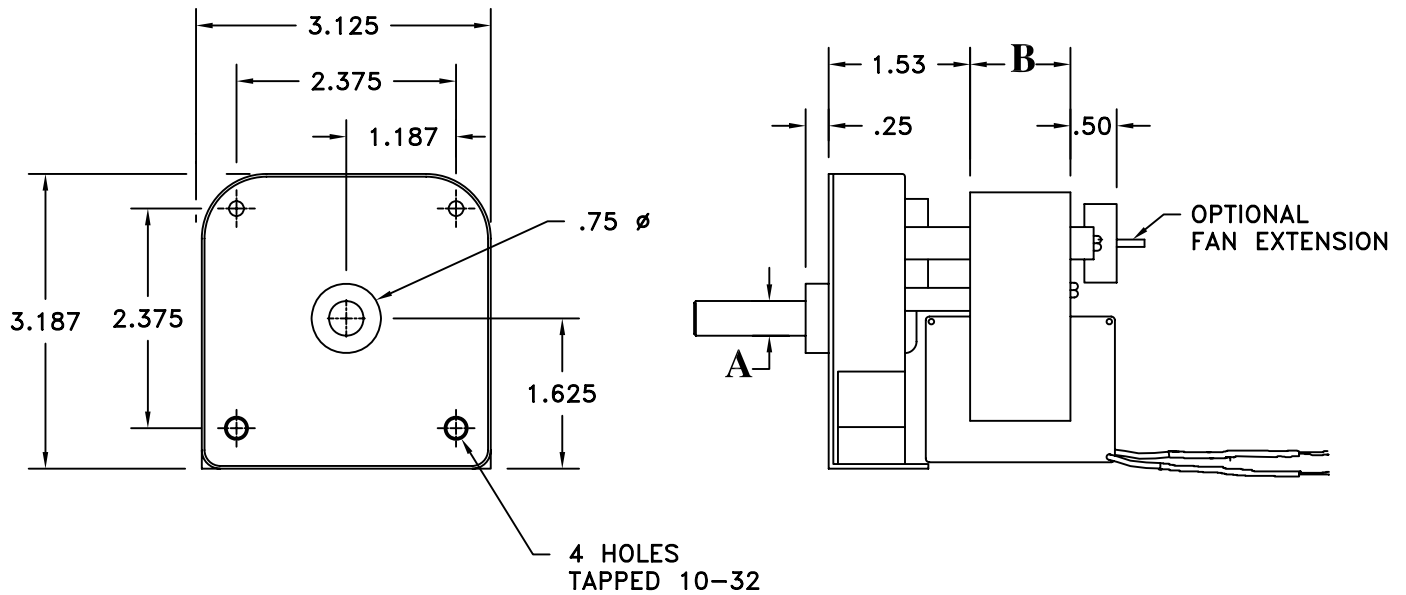


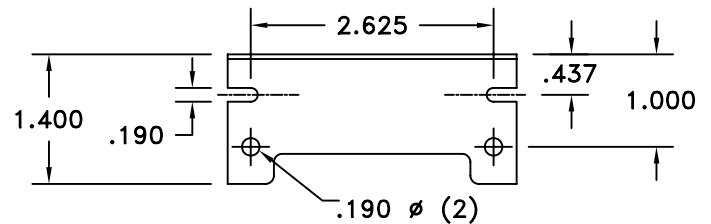
# "CD" MODEL



## AC UNIDIRECTIONAL GEARMOTOR

**A** - OUTPUT SHAFT DIAMETER & LENGTH PER CUSTOMER REQUIREMENTS.

**B** - 5/8" - 2" DEPENDING UPON RPM & TORQUE REQUIREMENTS



MOUNTING FOOT DETAIL

- \* OUTPUT SPEED FROM 1 - 800 RPM
- \* OUTPUT TORQUE TO 50 IN. LB.
- \* CONTINUOUS OR INTERMITTANT DUTY
- \* SELF-RESETTING THERMAL PROTECTION
- \* U.L., C.S.A. & T.U.V. APPROVED
- \* 18 GAUGE LEADS

## OPTIONS:

2.5" DIA. PLASTIC COOLING FAN  
 HEAVY DUTY NEEDLE BEARINGS  
 FRICTION BRAKES  
 TERMINALS  
 ONE WAY CLUTCH

REX ENGINEERING CORP.

TITUSVILLE, FL (321) 268-5500