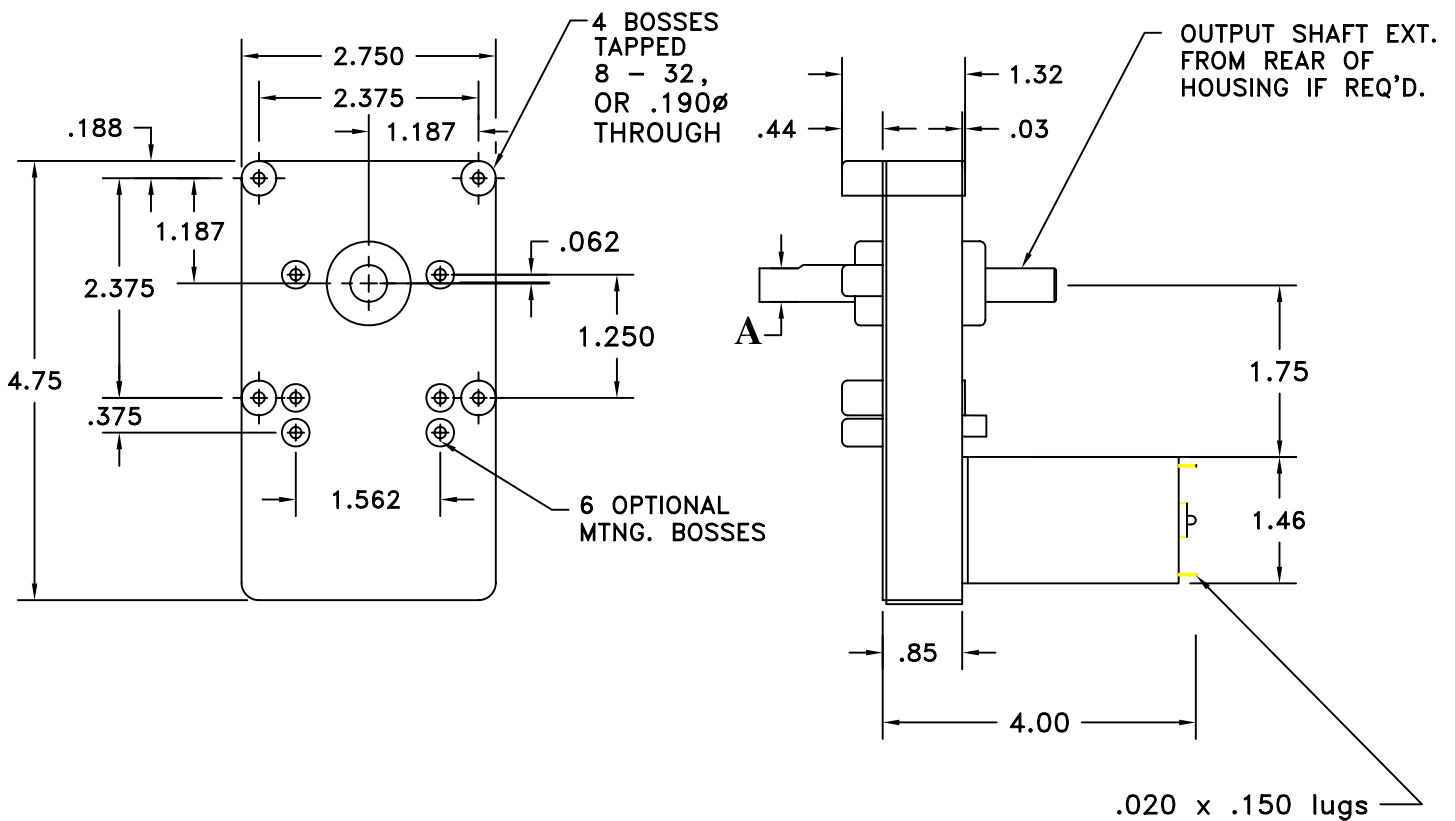


"EX" MODEL



DC REVERSIBLE GEARMOTOR

A - OUTPUT SHAFT DETAILS PER CUSTOMER REQUIREMENTS.

- * OUTPUT SPEED FROM 1 - 800 RPM
- * OUTPUT TORQUE TO 250 IN. LB.
- * 6 - 30 VDC
- * CONTINUOUS DUTY

OPTIONS:

HEAVY DUTY NEEDLE BEARINGS
ADJUSTABLE CAMS & LIMIT SWITCHES
ELECTRONIC NOISE ATTENUATORS

REX ENGINEERING CORP.

TITUSVILLE, FL (321)268-5500